

Innovative GIS Solutions for Government and Industry

Introducing The CAMPS™ Export Module

- Do you share GIS data with other agencies routinely?
- Do you need to reproject data when you export?
- Do you need to preserve relationships when you export data?
- Do you need to rename attributes during the export process?

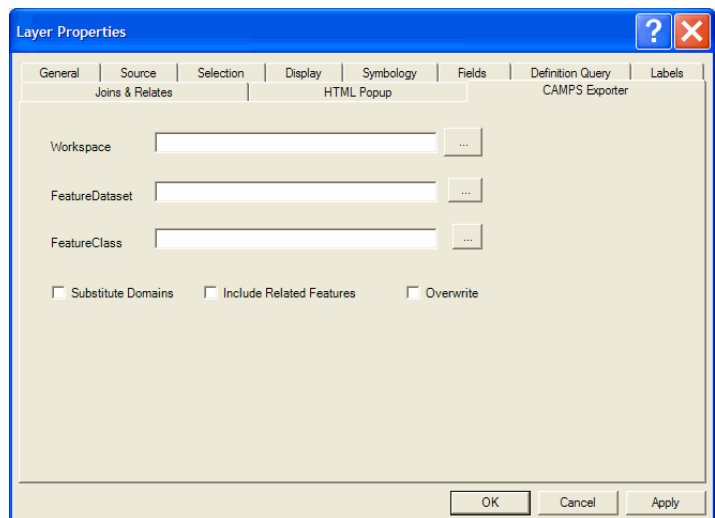
Today, local government agencies are required to justify their GIS investments. Many IT managers must now demonstrate a real return-on-investment (ROI) and develop a business case for every investment in technology. When you share data with outside agencies, you need to provide data in certain format. You also need to make sure all of your relationships are preserved. You do not want to manually go through this process every week or every month.

The CAMPS™ Export Module is the solution!

The Exporter module integrates with the layer properties and allows users to configure one or more layers for export to a shapefile or feature class within a personal geodatabase. All user configurations are saved with the ArcMap workspace to make exporting a snap.

CAMPS – Exporter will perform the following functions:

- Export features to shapefile or personal geodatabase format
- Preserve relationships if exporting to a personal geodatabase
- Reproject data by changing the data frame's coordinate system
- Rename attributes during the export process
- Save configuration within a MXD file



CAMPS – Exporter works by exporting the configured features in the Table of Contents (TOC). Only configured features within the current view extent will be exported.

It is recommended that users create an Export.mxd that contains only the features to be exported. The user will configure each of the features and use this MXD to export. All configurations will be saved within this MXD.

Passionate About Quality | Committed to Customer Service

Select an experienced GIS consulting firm for your next project!

Contact us today to learn how we can help you leverage your investments in ArcGIS.

EI Technologies, LLC

(720) 851-1717 | www.eitek.com

EI Technologies, LLC
Experience. Expertise. Execution.

