

# Innovative GIS Solutions for Government and Industry

## Introducing The CAMPS™ Auto Attribute Module

- Do you want your GIS technicians to be more efficient in their work?
- Do you wish more and more of their work was automated?

Today, local government agencies are required to justify their GIS investments. Many IT managers must now demonstrate a real return-on-investment (ROI) and develop a business case for every investment in technology. Better tools in the hands of GIS technician results in higher return on investment. For more efficient GIS...

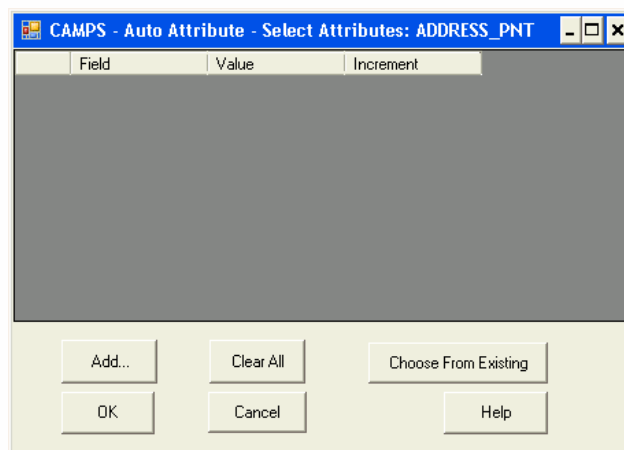
### The CAMPS™ Auto Attribute Module is the solution!

The Auto Attribute module allows a user to select attributes and assign an initial value and increment value to those attributes. When new features are created, the CAMPS™ – Auto Attribute application will apply the initial value and automatically increment it based on the parameters entered by the user.

If the initial value contains a character (for example 101A) then the application will increment only the character portion of the value (101A, 101B, 101C etc.).

The CAMPS™ – Auto Attribute application will also allow the user to carry over values from previously placed features. The user is able to select values for attributes from existing features and assign them to new features.

The Snake Tool (available within CAMPS™ – Auto Attribute) allows a user to auto increment attributes and carries over attributes existing polygons. Once the Snake Tool has been configured the user will draw a line through polygon features. All polygon features that touch this line will be updated.



*Passionate About Quality | Committed to Customer Service*

*Select an experienced GIS consulting firm for your next project!*

Contact us today to learn how we can help you leverage your investments in ArcGIS.

**EI Technologies, LLC**

(720) 851-1717 | [www.eitek.com](http://www.eitek.com)

**EI Technologies, LLC**  
Experience. Expertise. Execution.

Envision it  
**GIS** Plan it  
Implement it